



MONTHLY MEMBERSHIP PROGRESS REPORT

District 325A2

Results as of: 04/30/2018

GMT: KHAGENDRA SITLAULA

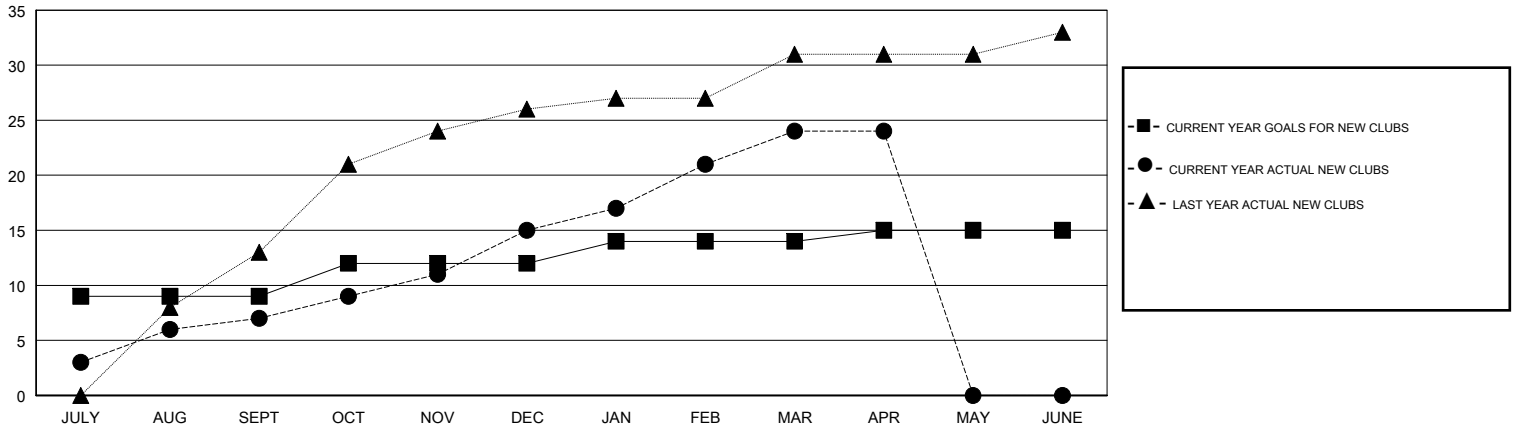
LOCATION NEPAL

GMT CA

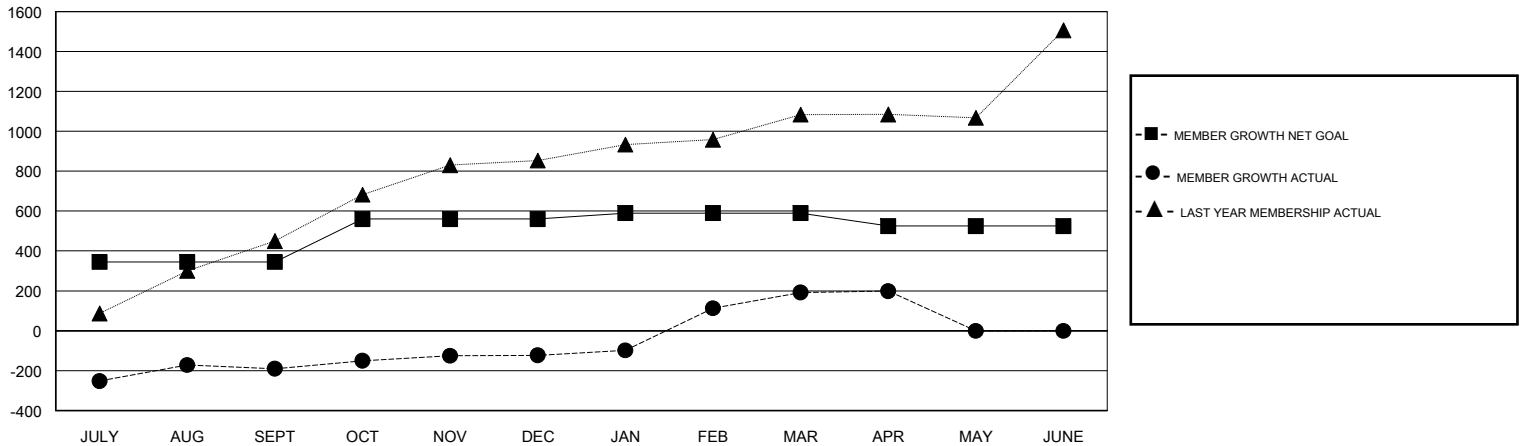
Clubs			
RESULTS FOR 2017-2018			
QUARTER	NEW CLUB GOAL	NEW CLUBS	DROPPED CLUBS
JULY/AUG/SEPT	9	7	0
OCT/NOV/DEC	3	8	1
JAN/FEB/MAR	2	9	0
APR/MAY/JUNE	1	0	0

Members			
RESULTS FOR 2017-2018			
QUARTER	MEMBER GROWTH NET GOAL	MEMBER GROWTH ACTUAL	DROPPED MEMBERS ACTUAL (including transfers)
JULY/AUG/SEPT	345	306	466
OCT/NOV/DEC	215	360	265
JAN/FEB/MAR	30	445	115
APR/MAY/JUNE	-65	44	36

GOALS AND ACTUAL NEW CLUBS CUMULATIVE



GOALS AND ACTUAL MEMBERS CUMULATIVE



DROPPED CLUBS: 1	98 CLUBS OF 179 ADDED 1 OR MORE NEW MEMBERS	<u>GENDER DISTRIBUTION</u>	
DROPPED MEMBERS		MALE	3,686 (72.87%)
DECEASED	2	FEMALE	1,372 (27.13%)
CLUB CANCELLED	4	Women Percentage Fiscal Year Goal: 25%	
OTHER	876	TOTAL FAMILY UNIT MEMBERS	2,637
TOTAL	882	FAMILY MEMBERS PAYING HALF DUES	1,589

[CLICK HERE FOR CUMULATIVE MEMBERSHIP DATA](#)